

ÁREA JARDIM: 193,5m²

ÁREA TERRAÇO: 47,4m²

ÁREA BRUTA APARTAMENTO: 235,5m²



SALITRE 183

DISCLAIMER

This blueprint is for indicative commercial use only. Actual finalised apartment may vary. The design and layout, total or partial, are confidential and copyrighted by WLA Properties Group. Strictly forbidden to use, distribute or copy without preliminary authorization from WLA Properties Group.

PROJECT NAME / NOME PROJECTO:
SALITRE183

LOCALISATION / LOCALIZAÇÃO:
**RUA DO SALITRE 183
1250-199 - LISBOA**

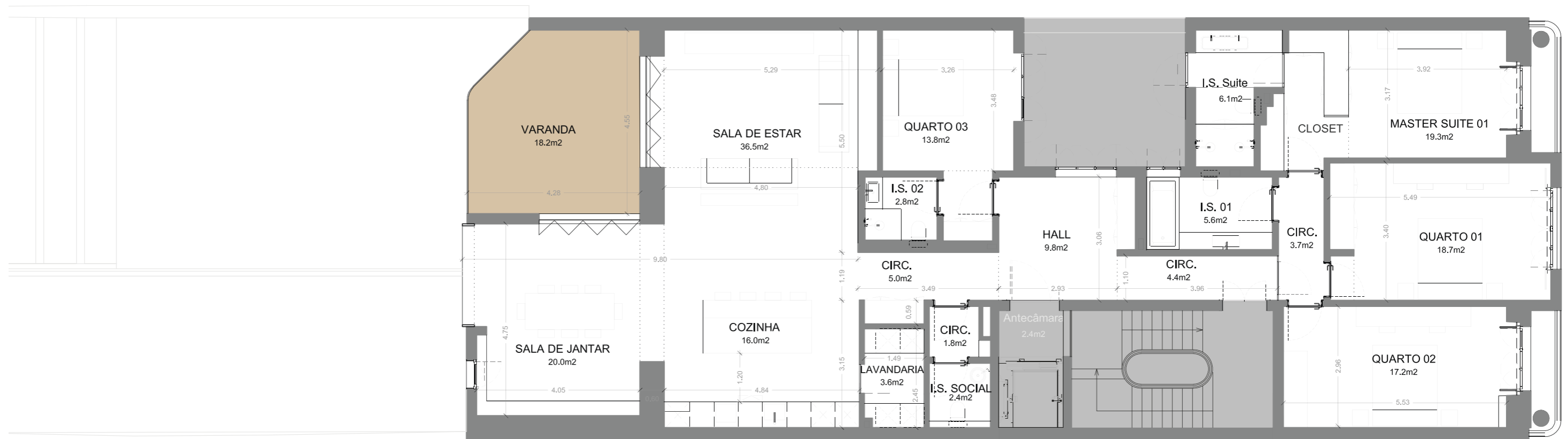
ARCHITECT / ARQUITECTO:
MATELIER LDA

NUMBER / NUMERO:
BETA300.01.02

FLOOR / PISO: **2**

SCALE / ESCALA:
1/200

DATE / DATA:
2018/02/10



ÁREA BRUTA APARTAMENTO: 243,1m²



SALITRE 183

DISCLAIMER

This blueprint is for indicative commercial use only. Actual finalised apartment may vary. The design and layout, total or partial, are confidential and copyrighted by WLA Properties Group. Strictly forbidden to use, distribute or copy without preliminary authorization from WLA Properties Group.

PROJECT NAME / NOME PROJECTO:
SALITRE183

LOCALISATION / LOCALIZAÇÃO:
**RUA DO SALITRE 183
1250-199 - LISBOA**

ARCHITECT / ARQUITECTO:
MATELIER LDA

NUMBER / NUMERO:
BETA300.01.04

FLOOR / PISO: **3 & 4**

SCALE / ESCALA:
1/100

DATE / DATA:
2018/02/10