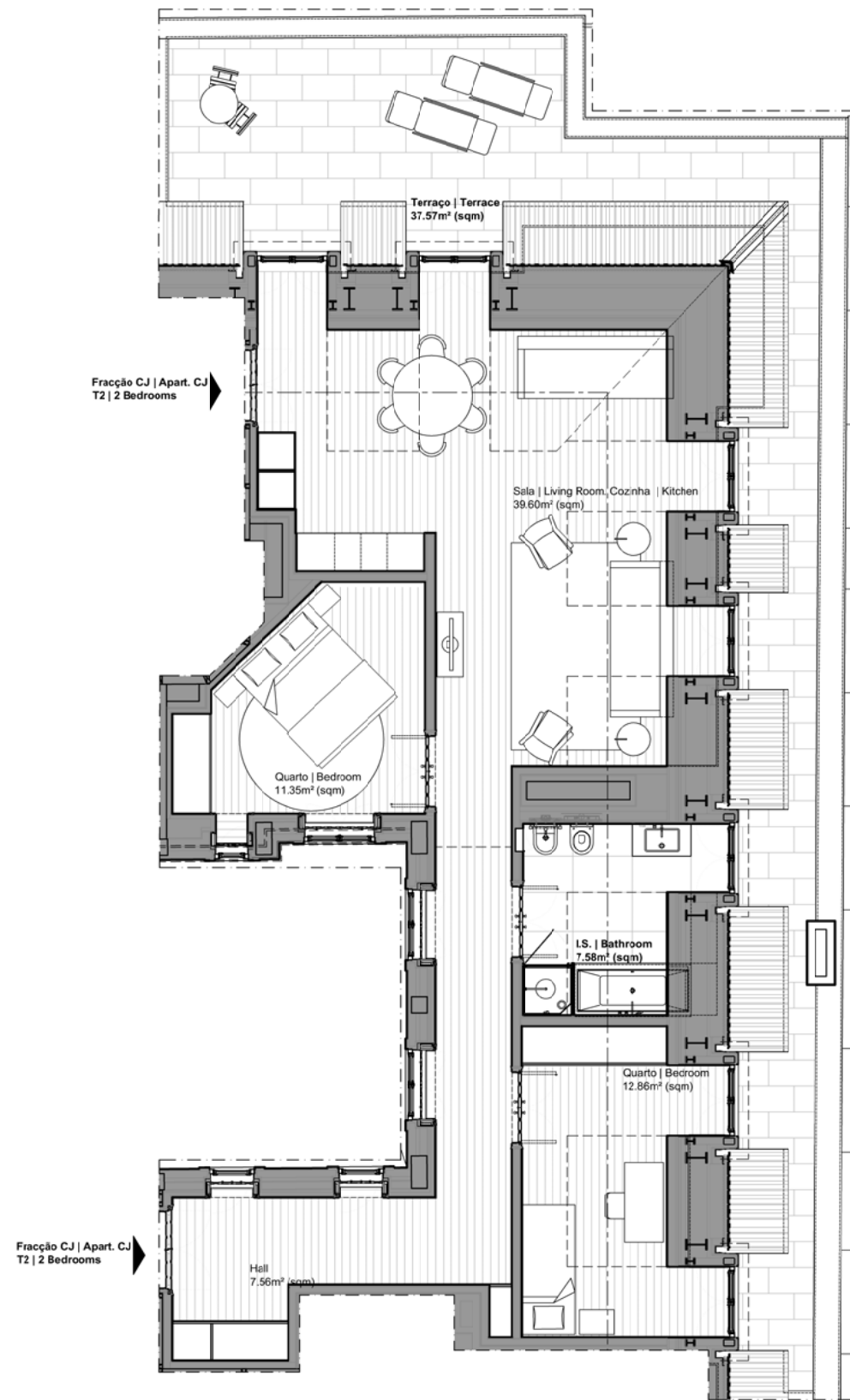
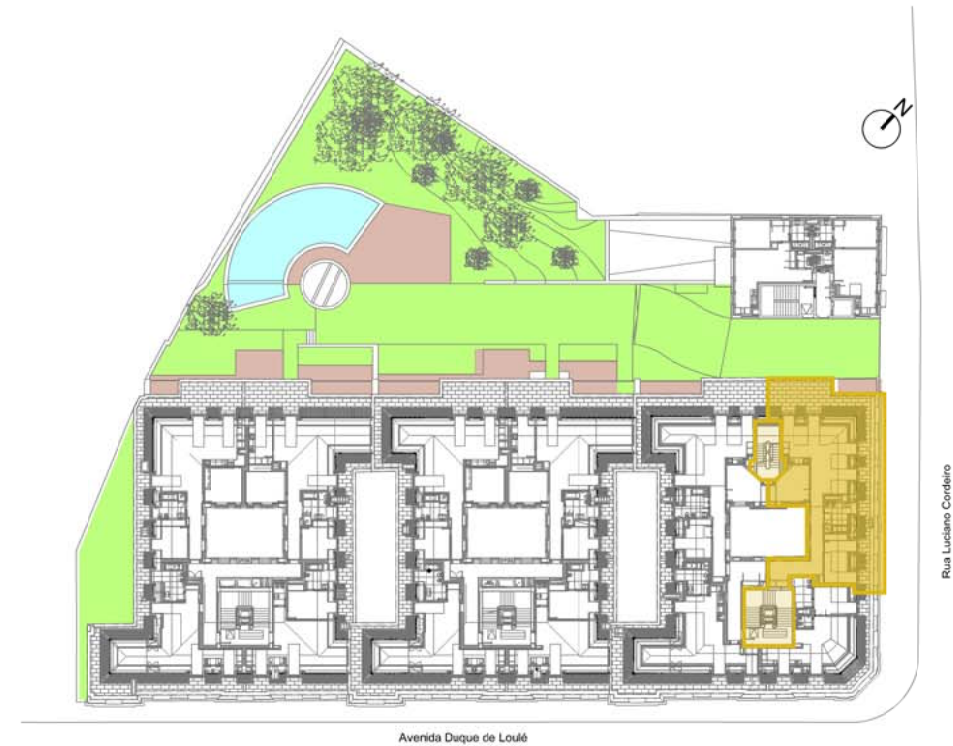
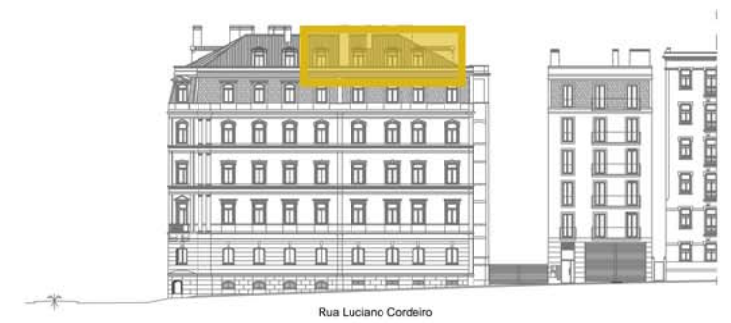


# S M

## SOTTOMAYOR RESIDÊNCIAS

LISBON APARTMENTS

by COPORGEST



Planta de piso  
Escala 1/100

Floor plan  
Scale 1/100

**Fracção CJ | T2 | Piso 6 - Edifício 86**  
 Área Bruta Interior: 136.46 m<sup>2</sup>  
 Arrecadação : 6.09 m<sup>2</sup> A-3.10  
 2 Lugares de Estacionamento no Piso -3  
 Número: P-3.41, P-3.42

**Apartment CJ | 2 Bedrooms | 6th Floor - Building 86**  
 Total Interior Area: 136.46 sqm  
 Storage Room : 6.09 sqm; A-3.10  
 2 Parking Lots in Floor -3  
 Identification: P-3.41, P-3.42

**Promotor :**  
Developer :



**coporgest**  
Companhia Portuguesa de Gestão e Desenvolvimento, S.A.

**Vendas :**  
Sales :

