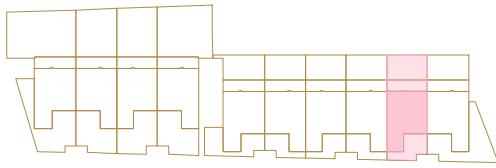




NORTH BUILDING



TOWNHOUSE I

T3 + 1 TRIPLEX

Gross Interior Area/Área Bruta Interior: 332,25m²

Gross Exterior Area/Área Bruta Exterior: 178,65m²

Parking/Estacionamento: # 3

FEATURES:

- PRIVATE GARDEN AND POOL
- PRIVATE GARAGE
- STUDY ROOM
- MASTER SUITE WITH PRIVATE TERRACE



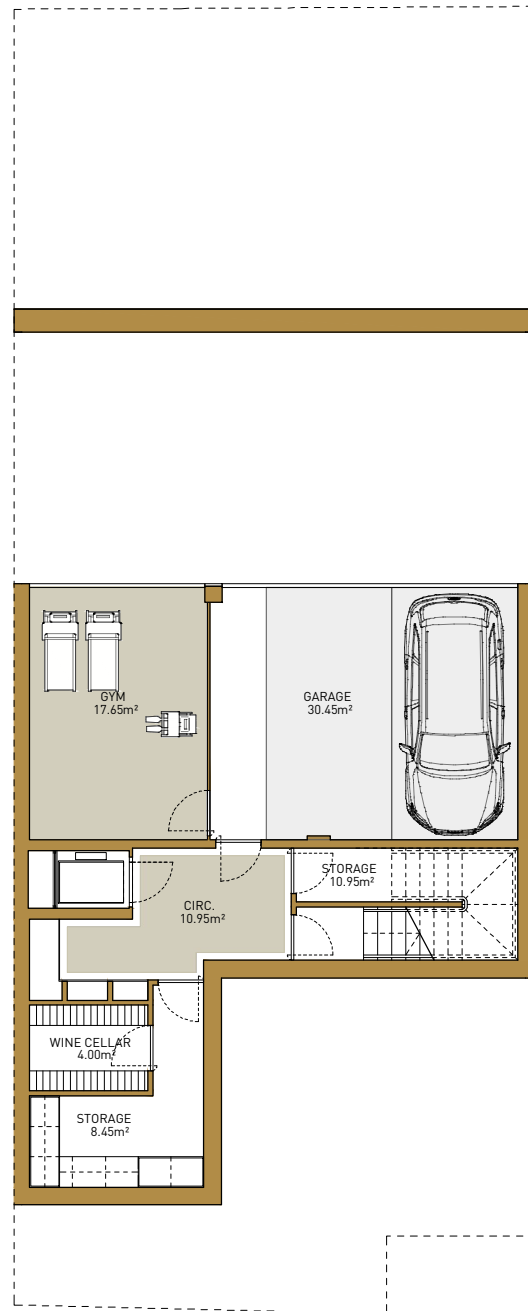
REFORMOSA



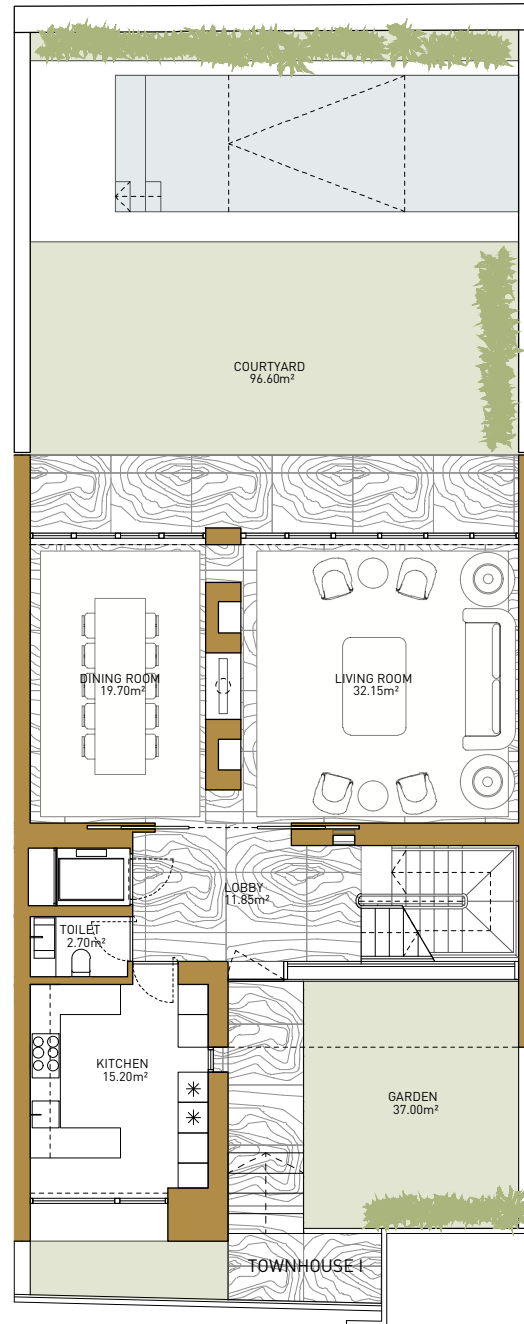
RUA MIGUEL LUPI, 22-26
1200-725, LISBON PORTUGAL

INFO@REFORMOSA.PT
WWW.REFORMOSA.PT

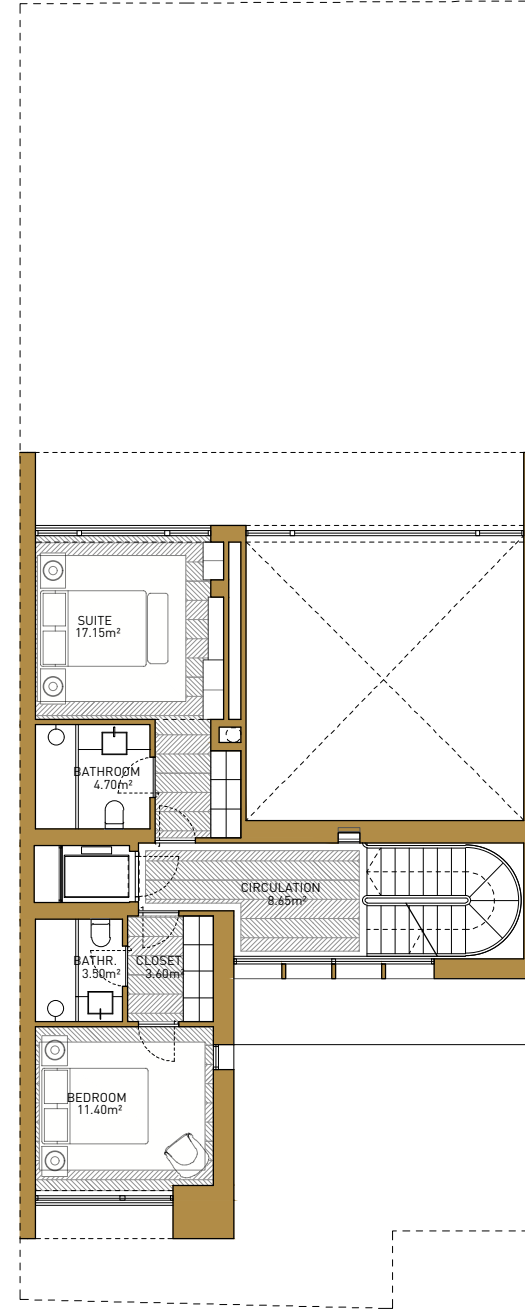
No elements contained in the here are binding, they are merely indicative and may be subject to change. This is not a contractual document and it is not binding.
Nenhum elemento contido neste documento é vinculativo, são meramente indicativos e podem estar sujeitos a alterações. Não é um documento contratual e não é vinculativo.



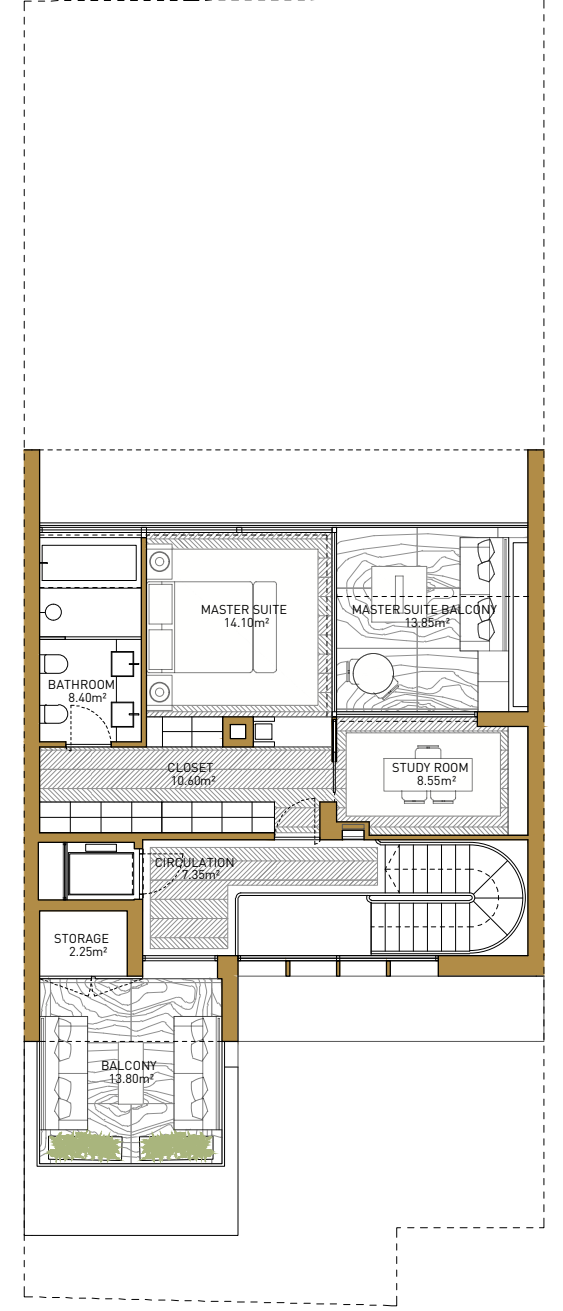
UNDERGROUND FLOOR PLAN



GROUND FLOOR PLAN



1ST FLOOR PLAN



2ND FLOOR PLAN